

FASECbuildings GROUP

FASEC (Hangzhou) Window Wall Co., Ltd

FASEC (Hangzhou) Window Wall Group company specializes in the offer of various aluminum & glass-based products design/manufacture/supply & technical support. We have successfully supplied quite a lot of different BIPVs (Building Integrated Photovoltaic), Glazed Windows & Doors, Glass & Aluminum Curtain Walls, Glass Railings & Louvers, Partition Walls, other Decorative Materials etc not only in China but also around the world. Australian standard, British Standard, Europe standard, and American standard etc aluminum & glass facade products are in our main research & development range.

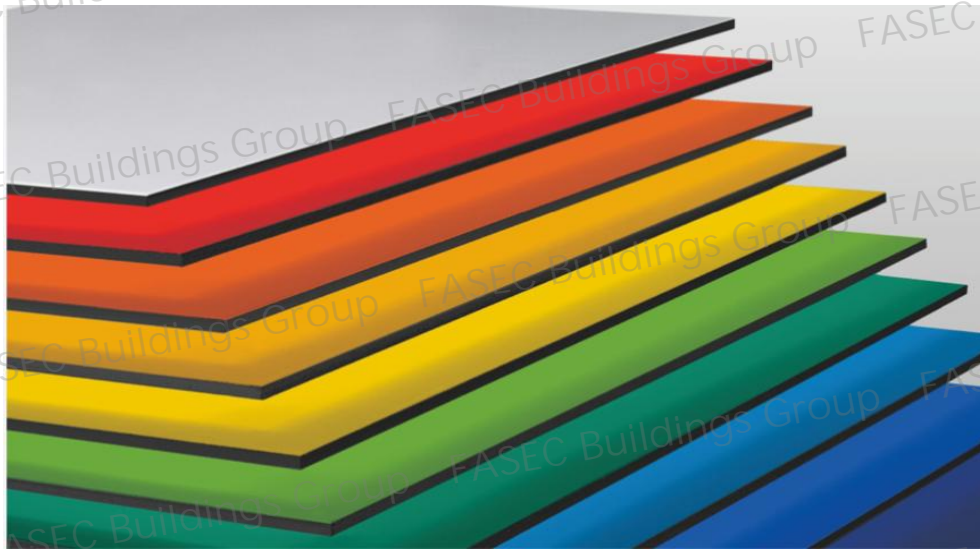
Currently, FASEC Buildings has set up a marketing and service network across Xi'an, Shanghai, Nanjing, Guangzhou, Wuhan, Xiangfan, Liuzhou, Wuhu, Suzhou, Zhengzhou, and Yunnan, etc., as well as exporting business with Australia, New Zealand, Germany, France, Bolivia, Chile, Peru, Thailand, Philippine, Nigeria, Vietnam, South Africa, Ghana, Kenya, UAE, Sudan, Iran, Angola, America, Canada, etc.



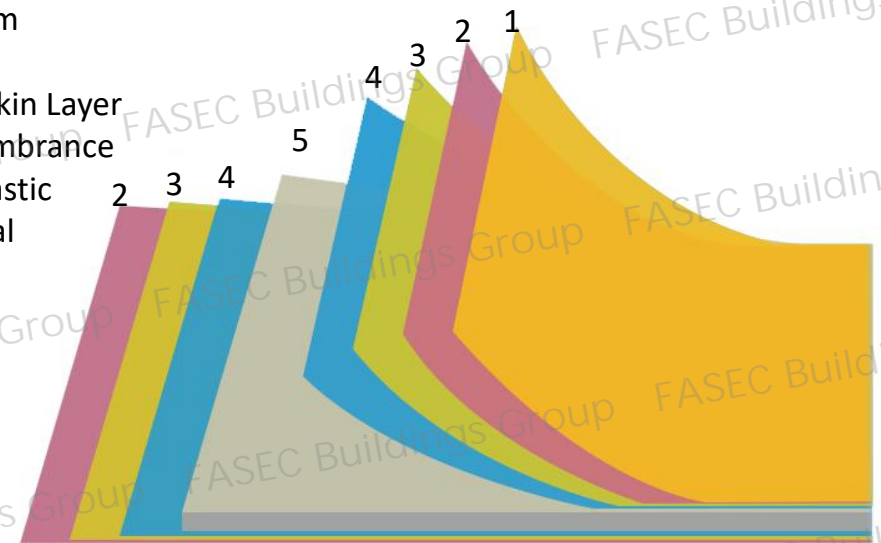
Aluminium Composite Panel

Aluminium composite panels are composed of two thin, massive aluminium sheets that are bonded to a core of the plastic polyethylene. Together with the plastic core, the aluminium forms a sort of sandwich. That is why the panels are also called aluminium sandwich panels. The two completely different material (metal and non-metal) not only retains the main characteristics of the original materials (metal aluminum and non-metallic polyethylene plastic), but also overcomes the shortcomings of the original materials, thus obtaining many excellent material properties, such as luxury, colorful decoration, weather resistance, corrosion resistance, impact resistance, fire prevention, moisture prevention, sound insulation, heat insulation, and seismic resistance; Lightweight, easy to process, easy to handle and install, and other characteristics.

Structural View of Aluminium Composite Panel



- 1 Protective Film
- 2, Paint Finish
- 3, Aluminium Skin Layer
- 4, Polymer Membrane
- 5, Non Toxic Plastic Core Material



Advantages of Aluminium Composite Panel

Aluminium composite sheets are easy to cut, drill and shape

This makes the material a popular choice for a wide range of cladding applications. Aluminium composite sheets can be used to create a striking façade, interiors, signage, modular kitchen or can be used to create subtle, understated cladding. ACP is also lightweight and easy to install, making it a popular choice for both internal and external cladding.

ACP is a low maintenance cladding material

When compared to other materials, facade cladding made from aluminum requires less maintenance. For example, wood ages and can peel off, and it needs to be sanded and painted every few years.

Does not require painting or weatherproofing

ACP sheets are made by sandwiching layers made of aluminum foil with LDPE, gluing them under extreme heat and pressure, and then creating a sturdy, waterproof product that comes in a wide range of styles to make an attractive and cost-effective rain-screen façade.

ACP is also a fire resistant cladding material

ACP panels are available in fire-retardant and anti-bacterial variants, making them some of the most preferred cladding materials in the world. Fire-retardant ACP panels are resistant to fire, as they do not conduct heat very quickly, making it an ideal choice for both commercial and residential buildings.

Multiple Use Cases

Buildings, particularly those that are completely covered, are a common sight today. As well as external cladding, ACP is also used to construct partitions, false ceilings, and other architectural elements. It is still primarily used for external cladding, although ACP is also used for partitions, false ceilings, and other applications. ACP is a lightweight, weatherproof material that is used extensively in the signage industry as an alternative to heavier, more expensive substrates. Because of its durability, efficiency, flexibility, light weight, ease of processing and forming, it can be used to design more innovative products. ACP is a aluminium sheet that can be painted in any colour, metallic or nonmetallic, as well as patterns that mimic wood or marble in addition to its durability and rigidity.

Special Property of Composite Aluminium Panel

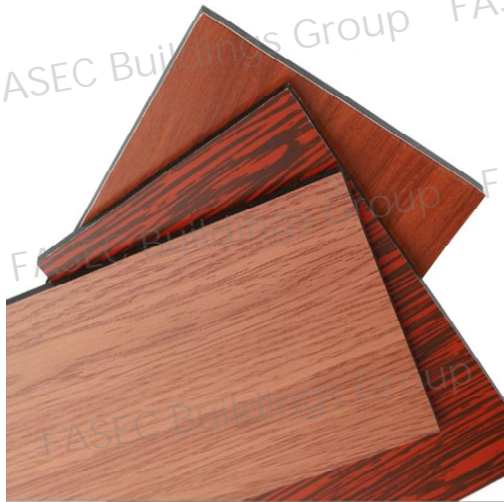
1, Could be shipped by with a whole big and to cut and groove and bend in various shapes with an excavator in the application site. And to add brackets and stiffeners and screws. In this way, this type of board can also be stockpiled and sold in pieces;



2, Could bend into final shape with brackets and stiffeners and screws in the factory with architectural diagram;

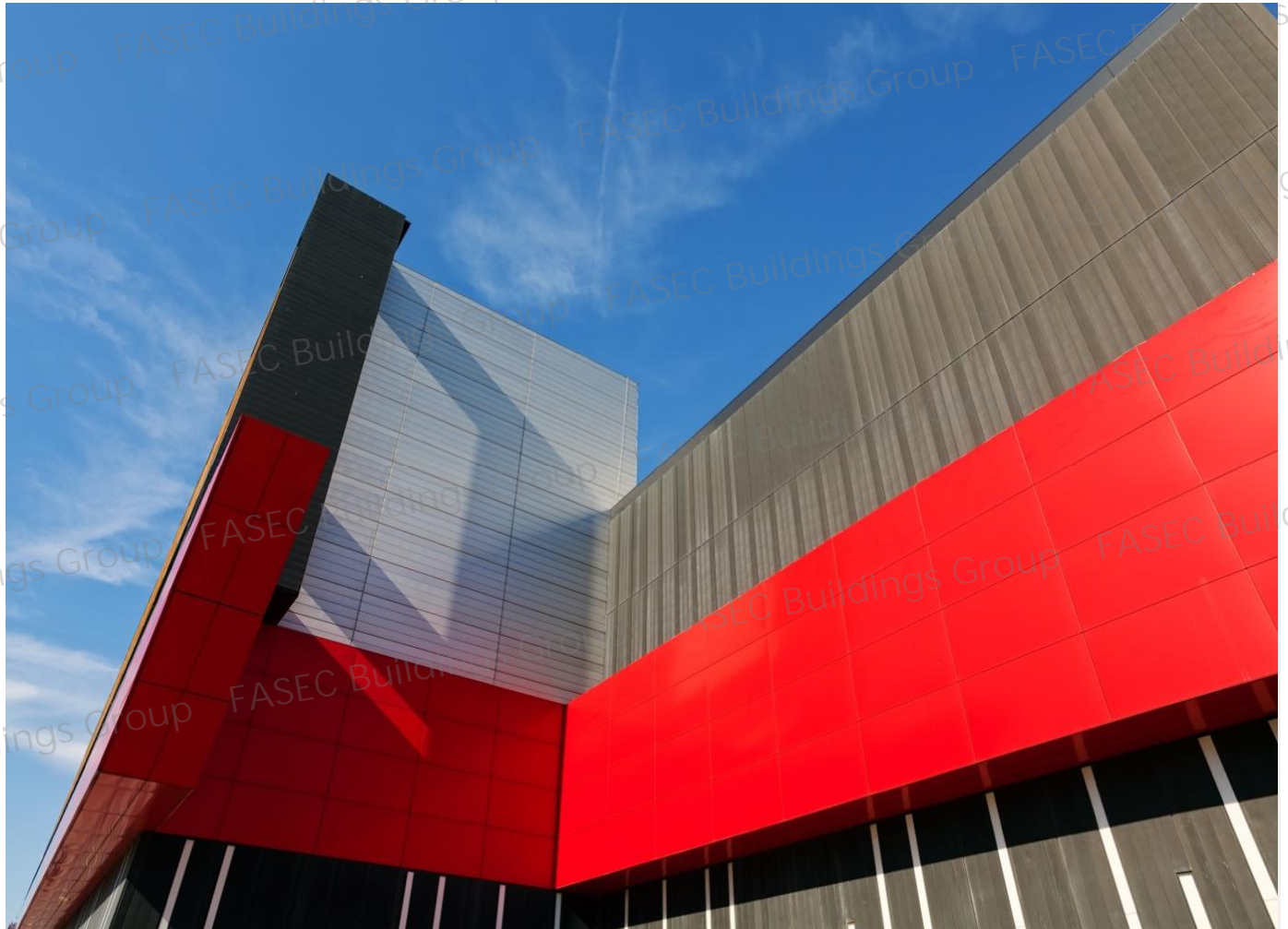
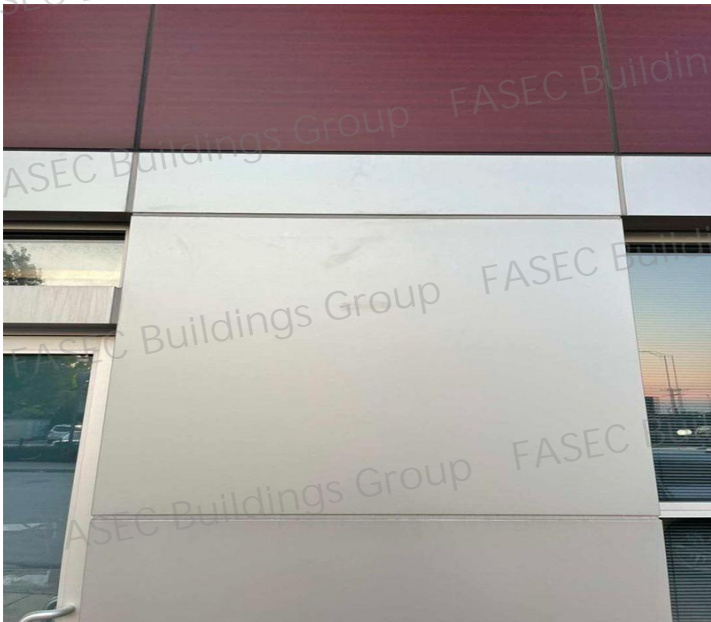


3, Customers can choose from various existing patterns in the factory, or choose aluminum plastic panels with a white or other color background, and print by themselves with a contact free aluminum plastic plate printer.



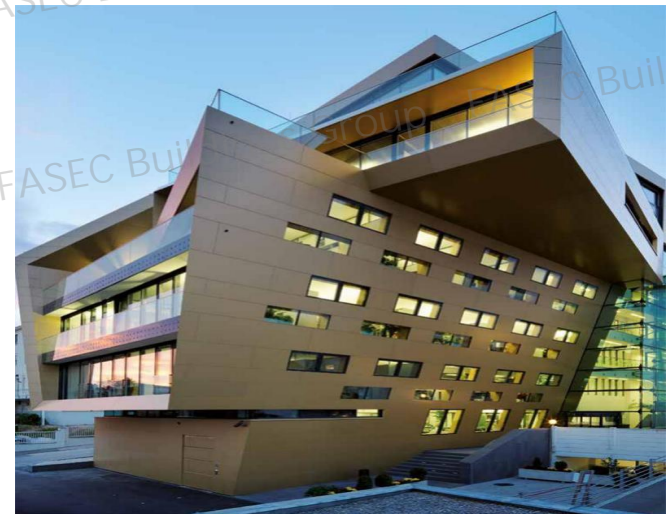
Tips and Tricks for Working with ACP

- When cutting ACP, use a sharp knife or Stanley knife. Score the face of the ACP sheet first, then snap the sheet along the score line.
- When drilling ACP, use a sharp HSS drill bit. Start the hole with a small pilot hole, then increase the size of the hole to the desired size.
- When shaping ACP, use a sharp jigsaw. ACP can be easily cut and shaped using standard woodworking tools.
- When installing ACP, use screws or rivets. ACP can be installed using a variety of methods, including screws, rivets or adhesive.

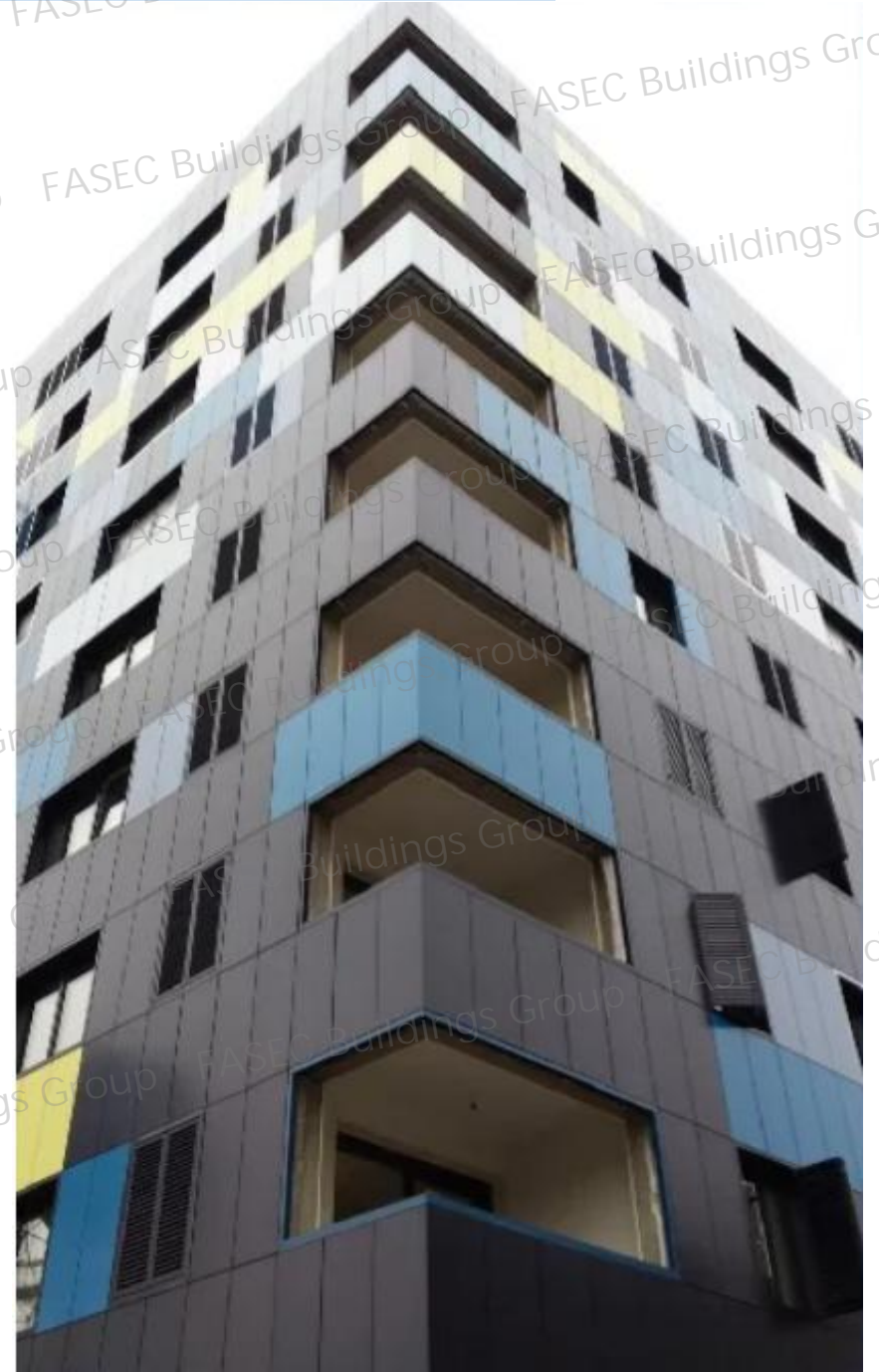


Parameter of Composite Aluminium Panel

Aluminium Skin Layer	0.05mm, 0.1mm, 0.15mm, 0.2mm, 0.25mm, 0.3mm, 0.4mm, 0.5mm
Panel Thickness	2mm, 3mm, 4mm, 5mm, 6mm, 7mm
Panel Width	1220mm, 1250mm, 1550mm, 1570mm, 2000mm
Panel Length	2440mm, 3200mm, 4000mm, 5000mm, 6000mm, 7000mm, 8000mm
Surface	PE coating, PVDF coating, NANO, Brush surface, Mirror surface
Inner Core	Normal non toxil PE core
Color	Solid Matt Color, Solid Glossy Color, Metallic Brushed Color, Marble Grain Color, Wooden Grain Color
Packing & Qty	LCL packing: wooden pallet package, 100 sheets per pack 1*20' FT container: 1500 sheets for size 1220*2440mm panel



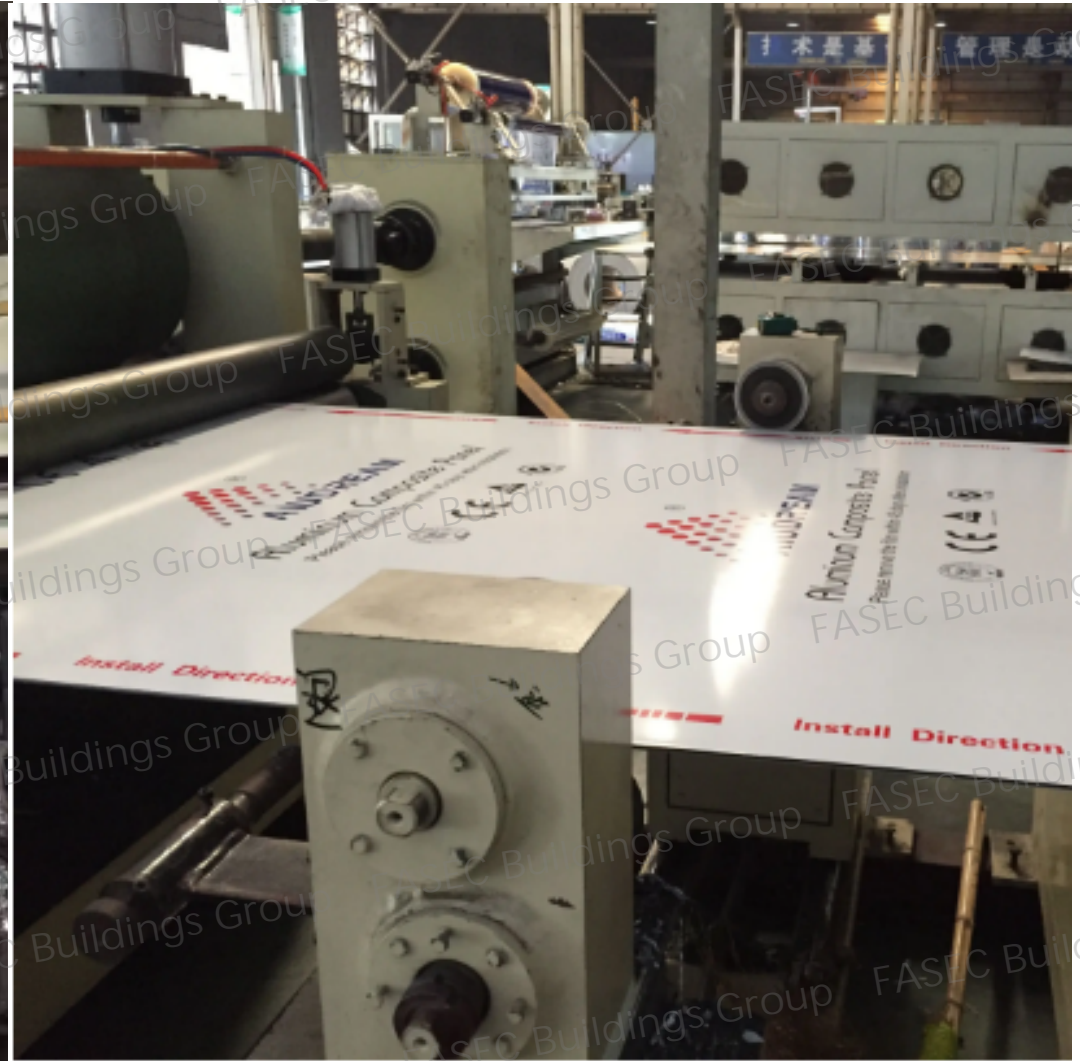
More Projects of Composite Aluminium Panel



More Projects of Composite Aluminium Panel



Workshop Display



Our factory has 10 production lines, 3 coating lines and about 500 workers. The annual production capacity is over 10,000,000 square meters. Since the company was founded, the enterprise has been certified by ISO9001:2008 International Quality Management System, ISO14001:2004 International Environment Management System, OHSAS18001:2001 Occupation Health Safety Management System and the products quality get approvals of CTC and CE, The products have been approved by SGS Fireproof Grade B1, and excellently approved by the sampling inspections by China Building Material Testing Center and China Quality Supervision & Testing Center.

Packing & Delivery of Composite Aluminium Panel



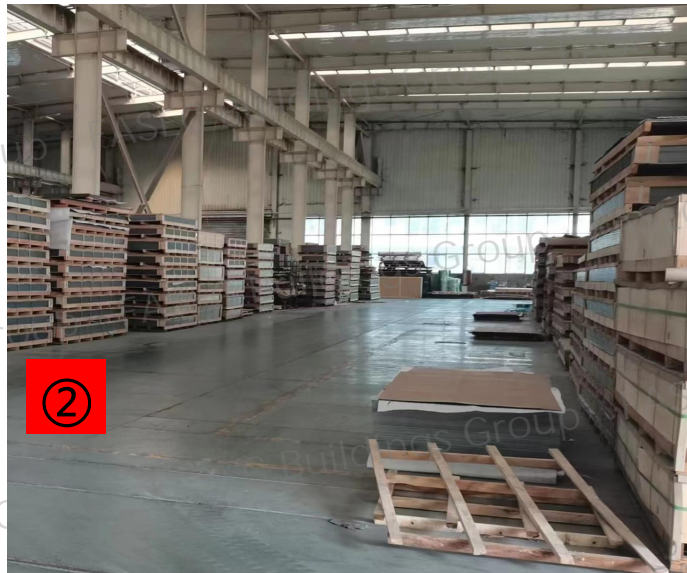
①

① Bulk Packing



③

② Wooden Pallet Packing



②

③ Steel Pallet Packing



Shipping Mark

Shipping Mark



Color Chart of Composite Aluminium Panel



ZWM-9919 Wooden Color



ZWM-9925 Wooden Color



ZWM-9931 Wooden Color



ZWM-9920 Wooden Color



ZWM-9926 Wooden Color



ZWM-9932 Wooden Color



ZWM-9921 Marble Color



ZWM-9927 Wooden Color



ZWM-9933 Wooden Color



ZWM-9922 Marble Color



ZWM-9928 Wooden Color



ZWM-9934 Wooden Color



ZWM-9923 Marble Color



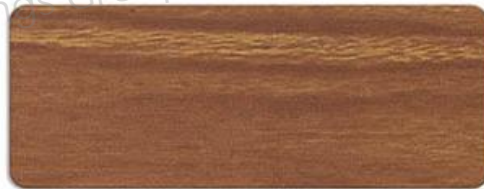
ZWM-9929 Wooden Color



ZWM-9935 Wooden Color



ZWM-9924 Marble Color



ZWM-9930 Wooden Color



ZWM-9936 Wooden Color

Color Chart of Composite Aluminium Panel



ZWM-9901 Anti Scratch Wooden Color



ZWM-9907 Anti Scratch Wooden Color



ZWM-9913 Anti Scratch Wooden Color



ZWM-9902 Anti Scratch Wooden Color



ZWM-9908 Anti Scratch Wooden Color



ZWM-9914 Anti Scratch Wooden Color



ZWM-9903 Anti Scratch Wooden Color



ZWM-9909 Anti Scratch Wooden Color



ZWM-9915 Anti Scratch Wooden Color



ZWM-9904 Anti Scratch Wooden Color



ZWM-9910 Anti Scratch Wooden Color



ZWM-9916 Anti Scratch Cement Color



ZWM-9905 Anti Scratch Wooden Color



ZWM-9911 Anti Scratch Wooden Color



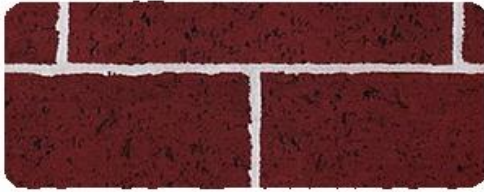
ZWM-9917 Anti Scratch Grey Brick Color



ZWM-9906 Anti Scratch Wooden Color



ZWM-9912 Anti Scratch Wooden Color



ZWM-9918 Anti Scratch Red Brick Color

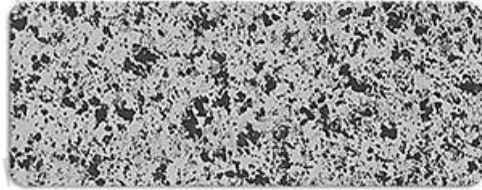
Color Chart of Composite Aluminium Panel



ZWM-9937 Marble Color



ZWM-9943 Marble Color



ZWM-9949 Marble Color



ZWM-9938 Marble Color



ZWM-9944 Marble Color



ZWM-9950 Marble Color



ZWM-9939 Marble Color



ZWM-9945 Marble Color



ZWM-9951 Marble Color



ZWM-9940 Marble Color



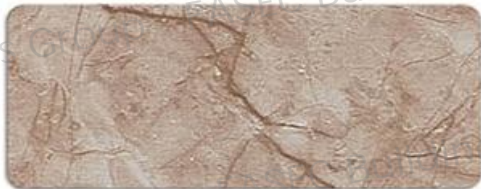
ZWM-9946 Marble Color



ZWM-9952 Marble Color



ZWM-9941 Marble Color



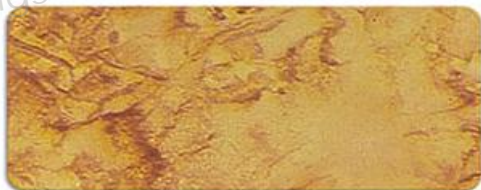
ZWM-9947 Marble Color



ZWM-9953 Marble Color



ZWM-9942 Marble Color



ZWM-9948 Marble Color



ZWM-9954 Marble Color

Color Chart of Composite Aluminium Panel



ZWM-9955 Silver Brushed



ZWM-9961 Steel Brushed



ZWM-9967 Light Blue Brushed



ZWM-9956 Crow Brushed



ZWM-9962 Steel Straight Brushed



ZWM-9968 Blue Brushed



ZWM-9957 Purple Brushed



ZWM-9963 Champagne Brushed



ZWM-9969 Red Brushed



ZWM-9958 Golden Brushed



ZWM-9964 Bronze Brushed



ZWM-9970 Black Brushed



ZWM-9959 Goden Mirror



ZWM-9965 Silver Mirror



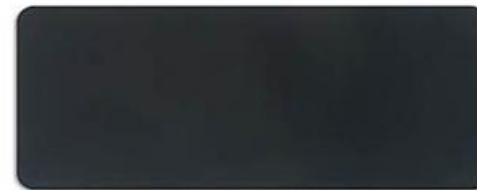
ZWM-9971 Grey Mirror



ZWM-9960 Rose Mirror



ZWM-9966 Bronze Mirror



ZWM-9972 Black Mirror

Color Chart of Composite Aluminium Panel



ZWM-8837 Pink



ZWM-8843 Telecom Green



ZWM-8849 Lake Blue



ZWM-8838 Grey Blue



ZWM-8844 Tender Green



ZWM-8850 Mobil Blue



ZWM-8839 Youth Blue



ZWM-8845 Apple Green



ZWM-8851 Jewelry Blue



ZWM-8840 Blue Green



ZWM-8846 Country Green



ZWM-8852 Telecom Blue



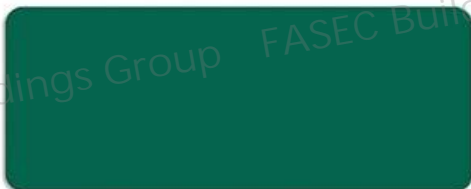
ZWM-8841 Emerald Green



ZWM-8847 Dark Green



ZWM-8853 Dark Blue



ZWM-8842 Green



ZWM-8848 Navy



ZWM-8854 Plice Blue

Color Chart of Composite Aluminium Panel



ZWM-8819 White



ZWM-8825 Red



ZWM-8831 Rose Red



ZWM-8820 Milky White



ZWM-8826 Bright Red



ZWM-8832 Dark Red



ZWM-8821 Peal White



ZWM-8827 Seaweed Grey



ZWM-8833 Pink



ZWM-8822 Light Beige



ZWM-8828 Orange Red



ZWM-8834 Dark Coffee



ZWM-8823 Beige



ZWM-8829 Orange



ZWM-8835 Coffee



ZWM-8824 Coffee



ZWM-8830 Light Orange



ZWM-8836 Light Coffee

Color Chart of Composite Aluminium Panel



ZWM-8855 Glossy White



ZWM-8861 Glossy Coffee Red



ZWM-8867 Glossy Dark Blue



ZWM-8856 Glossy Beige



ZWM-8862 Glossy Red



ZWM-8868 Glossy Blue



ZWM-8857 Glossy Ivory



ZWM-8863 Glossy High Red



ZWM-8869 Glossy Blue



ZWM-8858 Glossy Grey



ZWM-8864 Glossy Rose Red



ZWM-8870 Glossy Green



ZWM-8859 Glossy Black



ZWM-8865 Glossy Purple



ZWM-8871 Glossy Apple Green



ZWM-8860 Glossy Orange



ZWM-8866 Glossy Orange Red



ZWM-8872 Yellow

Color Chart of Composite Aluminium Panel



ZWM-8801 Silver



ZWM-8807 Grey Silver



ZWM-8813 Gold



ZWM-8802 White Silver



ZWM-8808 Dark Grey Silver



ZWM-8814 Light Gold



ZWM-8803 Pearl Grey



ZWM-8809 Seaweed Grey



ZWM-8815 Sandy Pink



ZWM-8804 Champagne



ZWM-8810 Sandy Black



ZWM-8816 Light Grey



ZWM-8805 Champagne Gold



ZWM-8811 Navy Black



ZWM-8817 Grey



ZWM-8806 Coffee



ZWM-8812 Black



ZWM-8818 Dark Grey

**We warmly welcome
old & new customers
to visit, negotiate, and
seek for common development.
Thank you!**

FASEC Buildings Group / FASEC (Hangzhou) Window Wall Co., Ltd.

Add: Yuancun Villiage, Xindeng Town, Fuyang District, Hangzhou, Zhejiang

Contact: Miss Cherry Li

Email: fasec60@hzfasec.com

Cell Phone: +86-13362176969 (wechat&whatsapp)

Tel: +86-571-878688170 Fax: +86-571-56389287

Manager: Mr. Tomy Gao

Cell Phone: +86-13362176969 (wechat&whatsapp)

Email: tomy@hzfasec.com

www.fasecwindowwall.com; www.aluminumglasswall.com